

OPERATING INSTRUCTIONS

Model B-2893 Stainless Steel Twin 10" (255mm) Jumbo Roll Toilet Tissue Dispenser

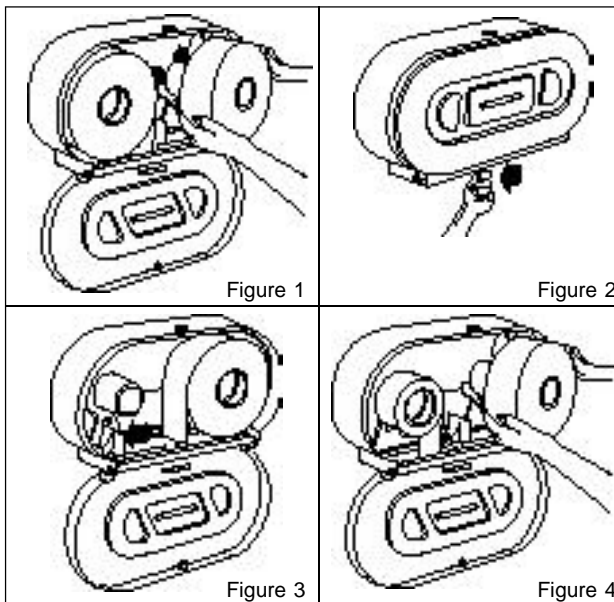
Unlock the cover with key furnished, then swing the cover down for filling.

Initially install two jumbo rolls of toilet tissue (Figure 1). Spindles accommodate 3" (75mm) diameter core rolls.

After the first roll is empty, move the lever at bottom of dispenser to the left (Figure 2) until the sliding access panel locks in position and allows for use of the reserve roll (Figure 3).

When the dispenser is opened for servicing, the sliding access panel automatically releases and returns to the original position on the right.

Move the remaining roll to the first position (left spindle) and install a new roll on the right spindle (Figure 4).



© 1999 by Bobrick Washroom Equipment, Inc.
Form No. 2893-69 Issued 2/99 Printed in U.S.A.

In the U.S.A.: **BOBRICK WASHROOM EQUIPMENT, INC.**
200 Commerce Drive, Clifton Park, New York 12065-1350 • Tel: (518) 877-7444 • FAX: 518-877-5029
11611 Hart Street, North Hollywood, California 91605-5882 • Tel: (818) 982-9600 • FAX: 818-503-1102
225 Bobrick Drive, Jackson, Tennessee 38301-5635 • Tel: (901) 424-7000 • FAX: 901-424-7800

In Canada: **BOBRICK WASHROOM EQUIPMENT OF CANADA LTD.**
45 Rolark Drive, Scarborough, Ontario M1R 3B1 • Tel: (416) 298-1611 • FAX: 416-298-6351